

‘The greenest building
is the one that already exists’

Carl Elefante

We believe in creating a better future by delivering highly efficient buildings. Sustainability drives everything we do, from the initial design concept to the final construction phase.

Our expertise focuses on improving the sustainability of the built environment, particularly through retrofit projects and high-performance new builds. We are dedicated to creating spaces that are both beautiful and sustainable, making a lasting positive impact on the world around us.



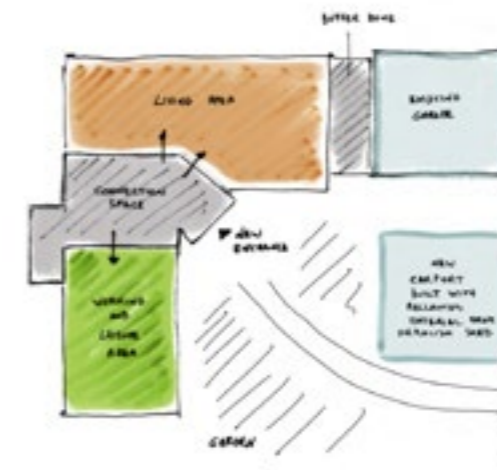
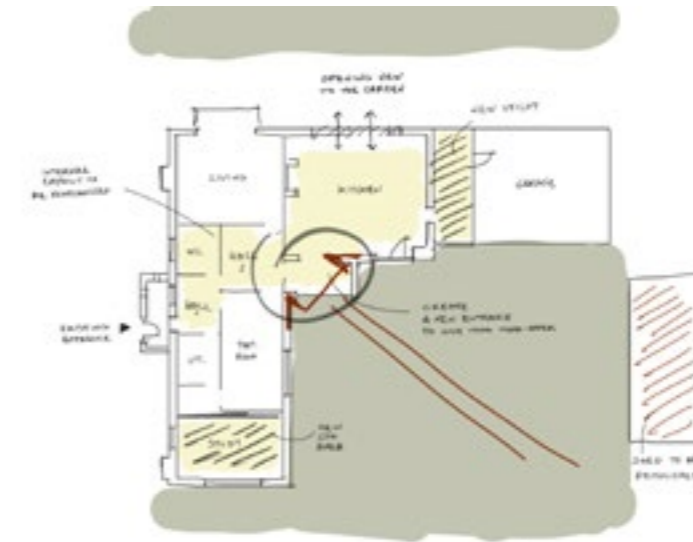
KEYSTONE
ARCHITECTURE
& DESIGN



Woodlands, Church Lench, Worcestershire

A beautiful countryside detached home in the heart of Worcestershire, extended and altered over the years.

We created a whole new entrance connecting the two wings of the building, enhancing the beauty of this dwelling with a double-height entrance. A crisp white exterior helped to create a common language between the various extensions added over the years, providing a cohesive appearance.

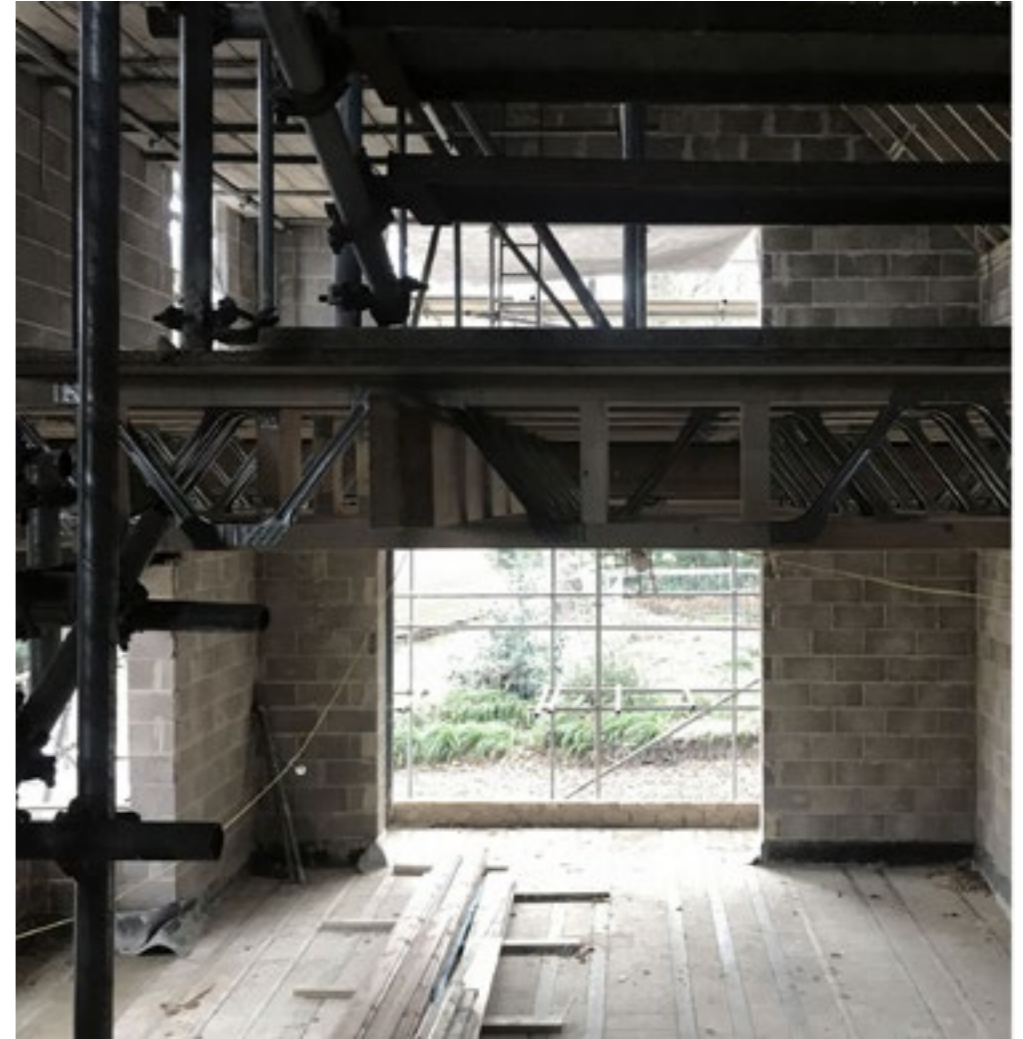


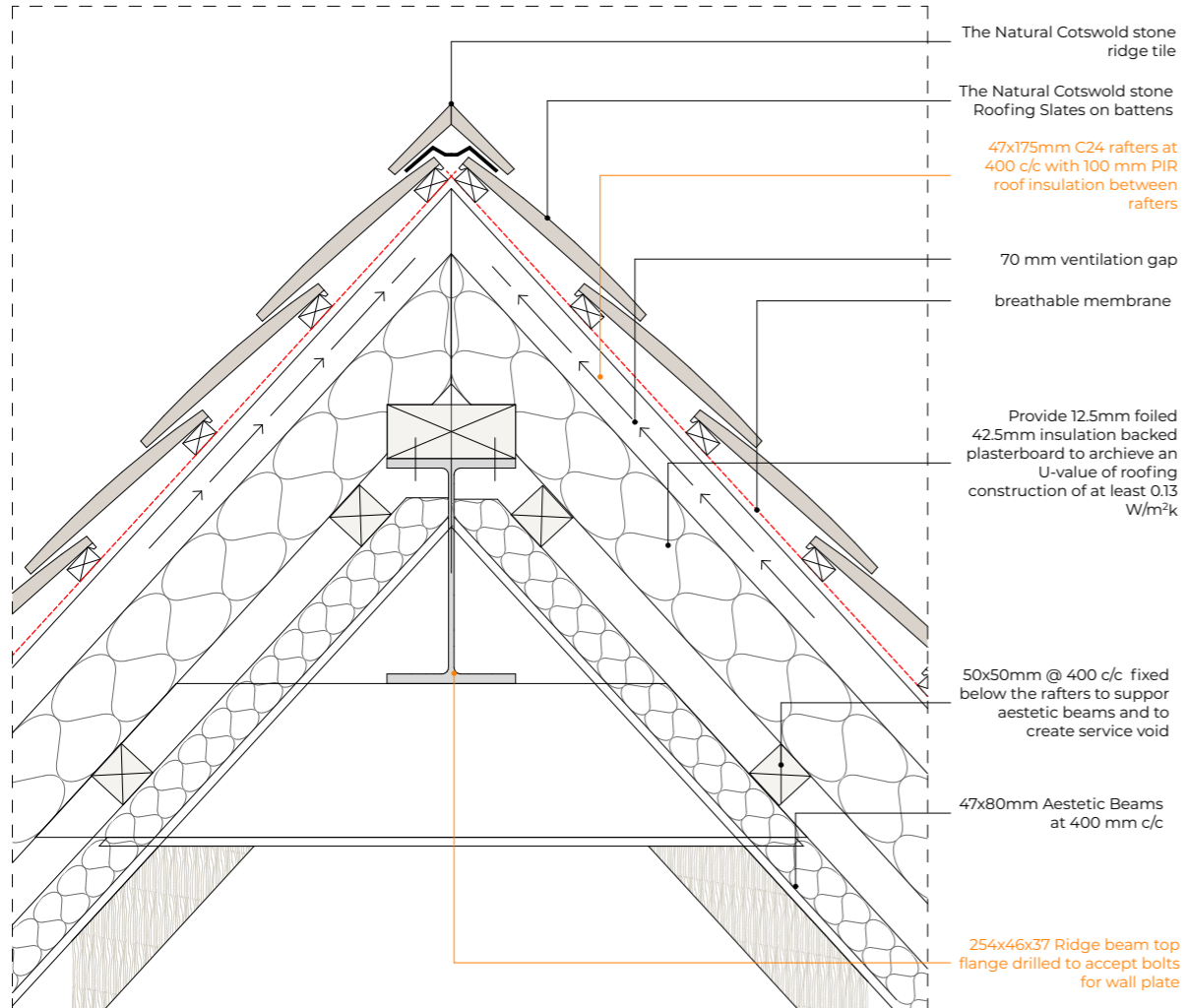




Talltrees, Chipping Campden

Perched on the slope of a hill, this home sits in perfect harmony with its surroundings. The yellow ochre stone and wooden details match the classic Cotswolds colour palette. The cottage-looked at the front features large rear windows overlooking an astonishing private garden, while the personalized interiors make this house the perfect residence for its owners.







Lavender Homes, Chipping Campden

A small development in the heart of the Cotswolds, featuring four charming homes built with the region's characteristic yellow stone and wooden details that blend seamlessly with the picturesque surroundings. These properties benefit from a private shared access, ensuring tranquility by being set away from the main road. This thoughtful design enhances the overall appeal and functionality of the homes, making them a perfect retreat in the idyllic Cotswolds.



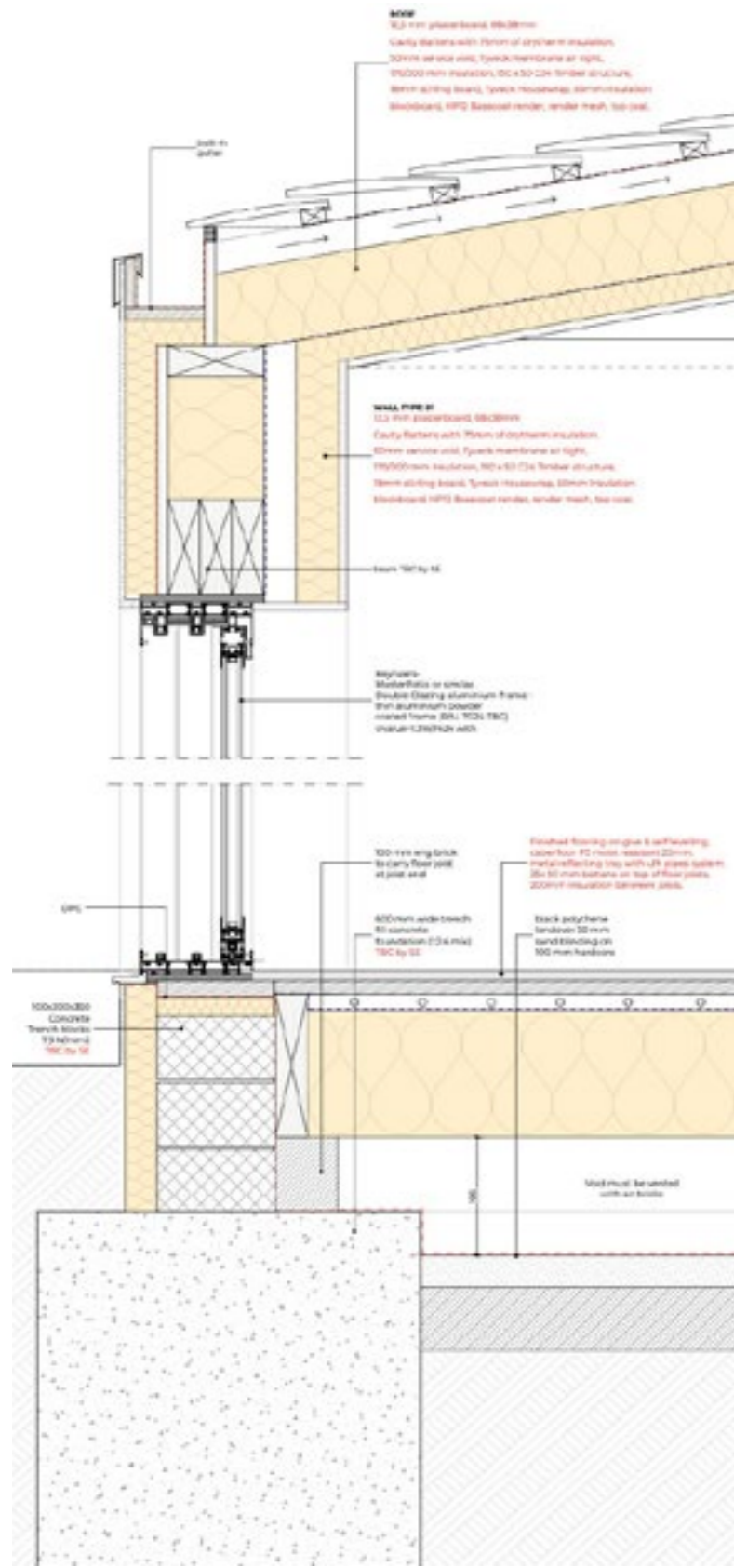




The Hurst, Birmingham

A project that goes beyond a simple extension, this detached home in south Birmingham has undergone a thorough retrofit. This extensive renovation involved not only enlarging the house footprint but also significantly improving its energy performance. Phase one focused on the downstairs area, adding a spacious rear extension to provide extra living space for the growing family. The new open-plan layout seamlessly connects the indoor and outdoor areas, enhancing the overall flow of the home.

As the family continues to grow, the house will evolve with them. Future plans include a side extension on the first floor and a loft conversion, which will add even more usable space.





Wintersemead, Broad Campden

A beautiful detached home built with energy efficiency measures, including renewable energy sources. It features a charming cottage-like appearance at the front, with modern openings at the rear to enjoy the garden views.

The house is entirely gas-free, utilizing air source heat pumps for heating and domestic hot water. Mechanical ventilation with heat recovery significantly reduces the heating system's requirements and provides cooling in the summer when necessary.

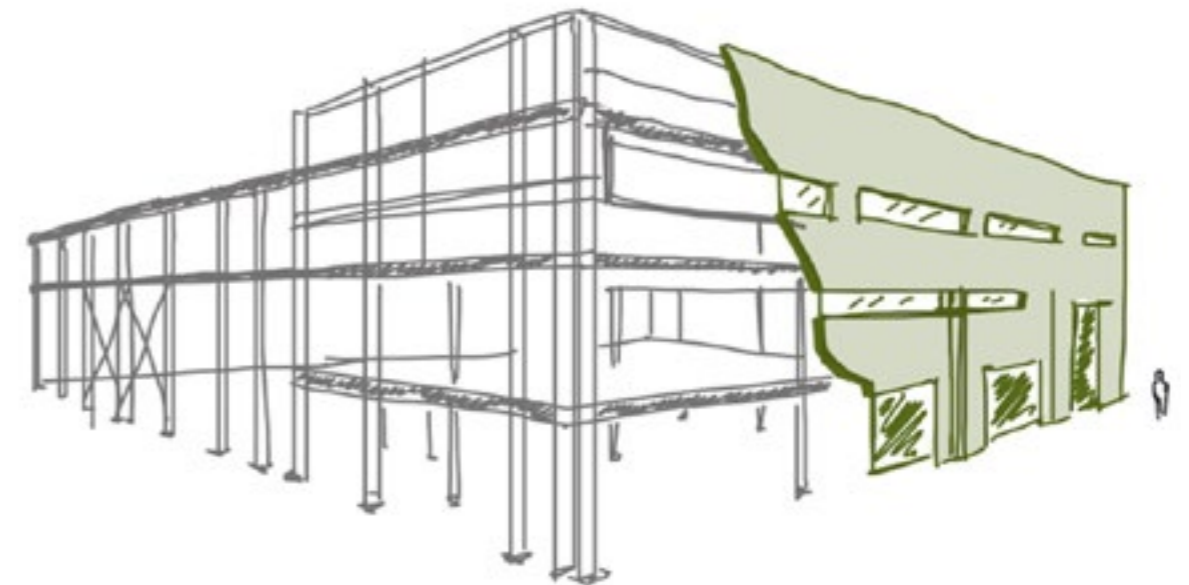


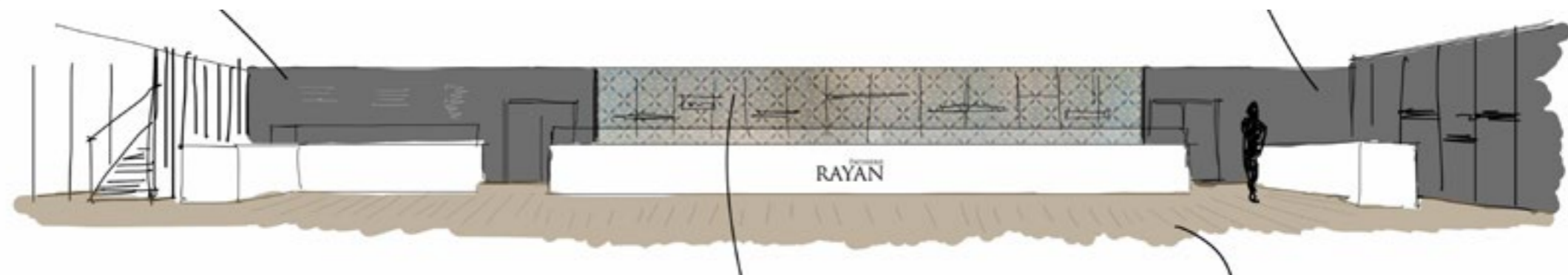
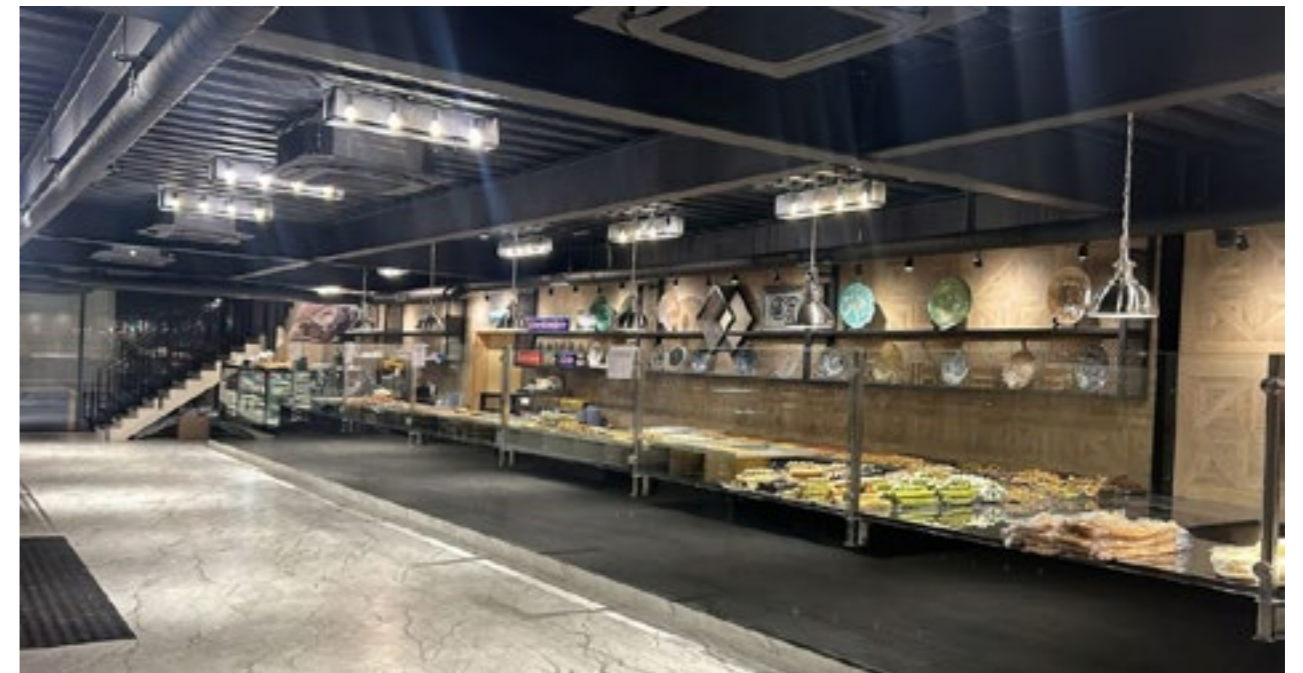
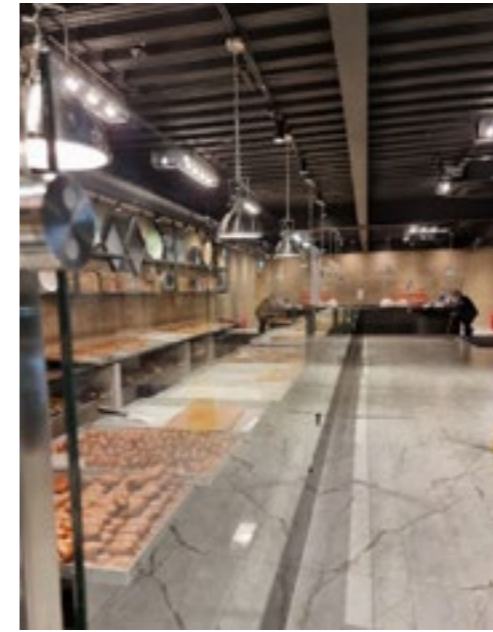
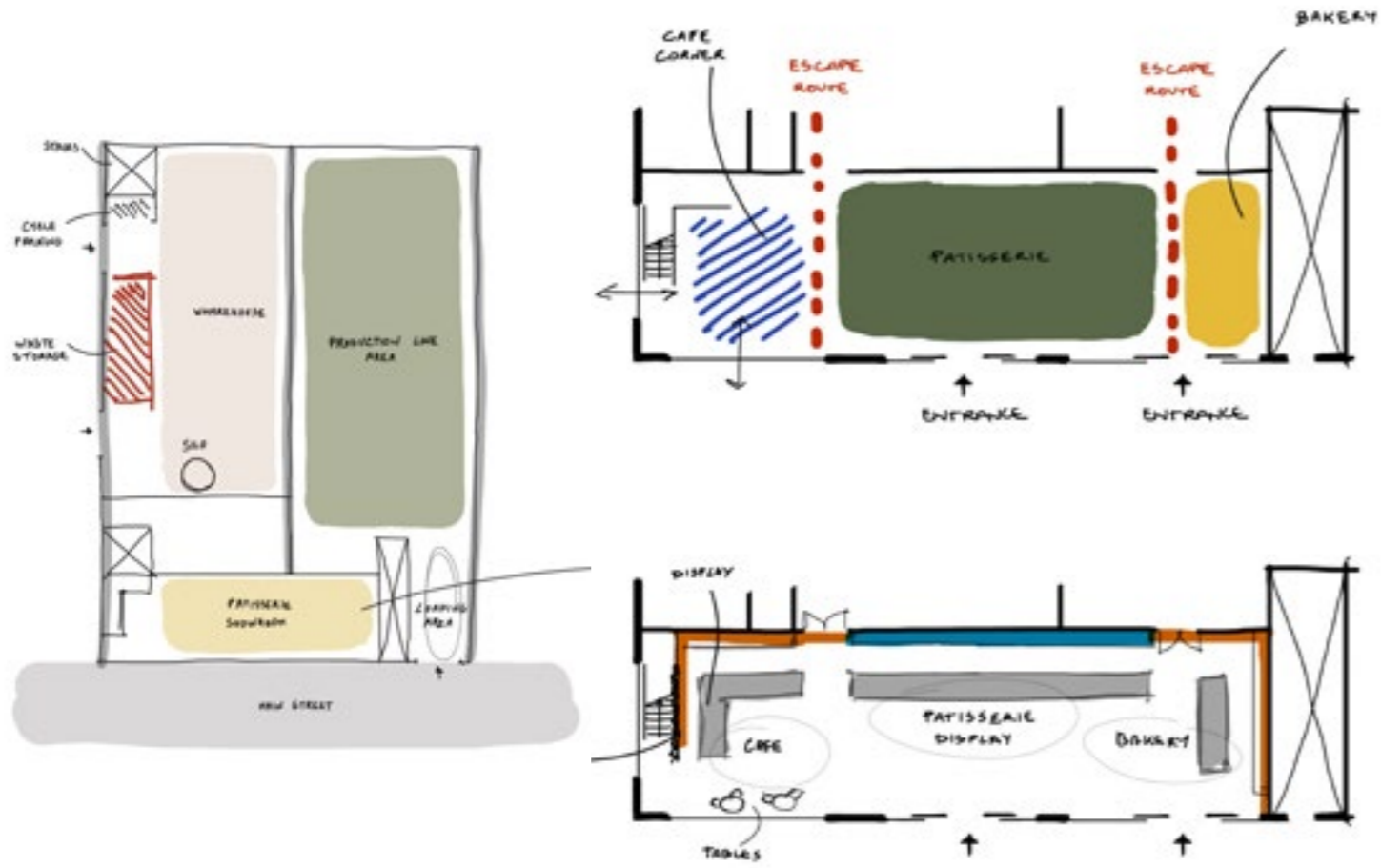


Industrial Bakery, London

Following an unfortunate fire that left them without their production facility, we worked closely with our clients to design the perfect replacement. Considering new regulations and a more efficient energy production system, our design focused on cost-effective solutions for the efficient operation of both the business and the building.

The project took nearly five years from concept design to completion. The goal was to build a larger factory on the same footprint as the previous one. By adding a mezzanine floor, we created additional space, allowing for a better and more efficient use of the area.






“A good quality project has a positive
impact in our lives”

This is our motto at Keystone

(+44) 077 52 97 92 44
info@keystonead.co.uk
www.keystonead.co.uk

 keystone architecture design

 keystone_ad

 keystoneaduk



